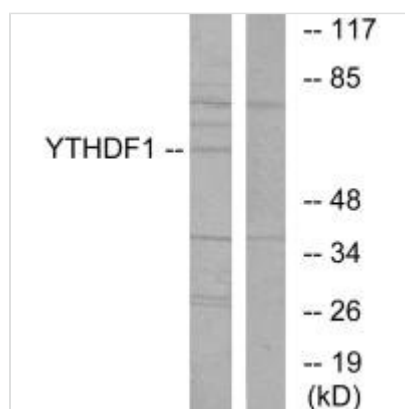




YTHDF1 Antibody

Product Code	CSB-PA132305
Storage	Upon receipt, store at -20°C or -80°C. Avoid repeated freeze.
Uniprot No.	Q9BYJ9
Immunogen	Synthesized peptide derived from N-terminal of Human YTHDF1.
Raised In	Rabbit
Species Reactivity	Human, Mouse, Rat
Specificity	The antibody detects endogenous levels of total YTHDF1 protein.
Tested Applications	ELISA, WB; WB: 1:500-1:3000
Form	Rabbit IgG in phosphate buffered saline (without Mg ²⁺ and Ca ²⁺), pH 7.4, 150mM NaCl, 0.02% sodium azide and 50% glycerol.
Purification Method	The antibody was affinity-purified from rabbit antiserum by affinity-chromatography using epitope-specific immunogen.
Clonality	Polyclonal
Alias	YTH domain family protein 1; Dermatomyositis associated with cancer putative autoantigen 1; DACA-1; YTHDF1; C20orf21
Product Type	Polyclonal Antibody
Immunogen Species	Homo sapiens (Human)
Target Names	YTHDF1

Image



Western blot analysis of extracts from 293 cells, using YTHDF1 antibody.

Usage

For Research Use Only. Not for use in diagnostic or therapeutic procedures.