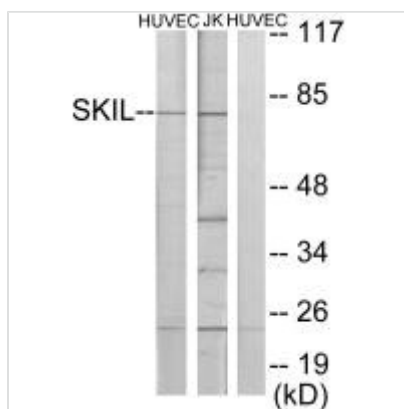




SKIL Antibody

Product Code	CSB-PA099034
Storage	Upon receipt, store at -20°C or -80°C. Avoid repeated freeze.
Uniprot No.	P12757
Immunogen	Synthesized peptide derived from C-terminal of Human SKIL.
Raised In	Rabbit
Species Reactivity	Human, Mouse
Specificity	The antibody detects endogenous levels of total SKIL protein.
Tested Applications	ELISA, WB; WB: 1:500-1:3000
Form	Rabbit IgG in phosphate buffered saline (without Mg ²⁺ and Ca ²⁺), pH 7.4, 150mM NaCl, 0.02% sodium azide and 50% glycerol.
Purification Method	The antibody was affinity-purified from rabbit antiserum by affinity-chromatography using epitope-specific immunogen.
Clonality	Polyclonal
Alias	Ski-like protein; Ski-related protein; Ski-related oncogene; SKIL; SNO
Product Type	Polyclonal Antibody
Immunogen Species	Homo sapiens (Human)
Target Names	SKIL

Image



Western blot analysis of extracts from HUVEC cells and Jurkat cells, using SKIL antibody.

Usage

For Research Use Only. Not for use in diagnostic or therapeutic procedures.