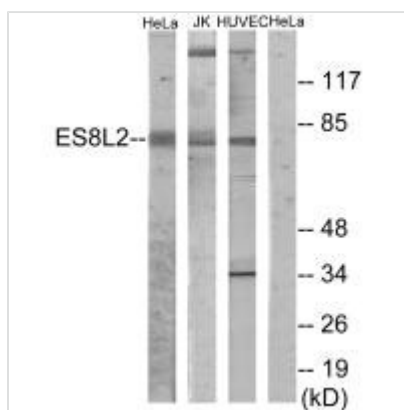




EPS8L2 Antibody

Product Code	CSB-PA204841
Storage	Upon receipt, store at -20°C or -80°C. Avoid repeated freeze.
Uniprot No.	Q9H6S3
Immunogen	Synthesized peptide derived from internal of Human ES8L2.
Raised In	Rabbit
Species Reactivity	Human, Mouse
Specificity	The antibody detects endogenous levels of total ES8L2 protein.
Tested Applications	ELISA, WB; WB: 1:500-1:3000
Form	Rabbit IgG in phosphate buffered saline (without Mg ²⁺ and Ca ²⁺), pH 7.4, 150mM NaCl, 0.02% sodium azide and 50% glycerol.
Purification Method	The antibody was affinity-purified from rabbit antiserum by affinity-chromatography using epitope-specific immunogen.
Clonality	Polyclonal
Alias	Epidermal growth factor receptor kinase substrate 8-like protein 2; Epidermal growth factor receptor pathway substrate 8-related protein 2; EPS8-like protein 2; EPS8L2; EPS8R2
Product Type	Polyclonal Antibody
Immunogen Species	Homo sapiens (Human)
Target Names	EPS8L2

Image



Western blot analysis of extracts from HeLa cells, Jurkat cells and HUVEC cells, using ES8L2 antibody.

Usage For Research Use Only. Not for use in diagnostic or therapeutic procedures.