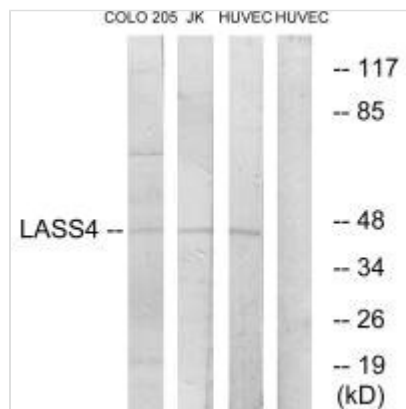




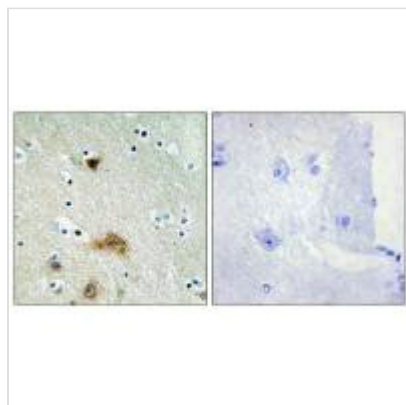
# CERS4 Antibody

<b>Product Code</b>	CSB-PA046553
<b>Storage</b>	Upon receipt, store at -20°C or -80°C. Avoid repeated freeze.
<b>Uniprot No.</b>	Q9HA82
<b>Immunogen</b>	Synthesized peptide derived from internal of Human LASS4.
<b>Raised In</b>	Rabbit
<b>Species Reactivity</b>	Human,Mouse
<b>Tested Applications</b>	ELISA,WB,IHC;WB:1:500-1:3000,IHC:1:50-1:100
<b>Form</b>	Liquid
<b>Storage Buffer</b>	Liquid in PBS containing 50% glycerol, 0.5% BSA and 0.02% sodium azide.
<b>Purification Method</b>	The antibody was affinity-purified from rabbit antiserum by affinity-chromatography using epitope-specific immunogen.
<b>Clonality</b>	Polyclonal
<b>Product Type</b>	Polyclonal Antibody
<b>Immunogen Species</b>	Homo sapiens (Human)
<b>Target Names</b>	CERS4

## Image



Western blot analysis of extracts from COLO cells, Jurkat cells and HUVEC cells, using LASS4 antibody.



Immunohistochemistry analysis of paraffin-embedded human brain tissue using LASS4 antibody.



**Usage**

For Research Use Only. Not for use in diagnostic or therapeutic procedures.