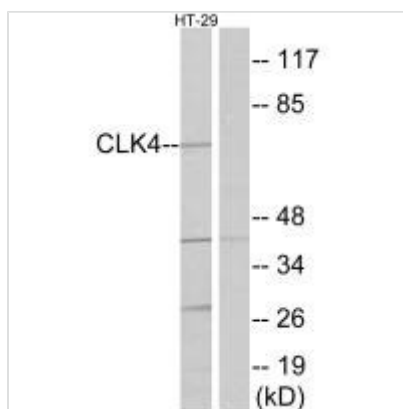




CLK4 Antibody

Product Code	CSB-PA129473
Storage	Upon receipt, store at -20°C or -80°C. Avoid repeated freeze.
Uniprot No.	Q9HAZ1
Immunogen	Synthesized peptide derived from internal of Human CLK4.
Raised In	Rabbit
Species Reactivity	Human, Mouse
Specificity	The antibody detects endogenous levels of total CLK4 protein.
Tested Applications	ELISA, WB; WB: 1:500-1:3000
Form	Rabbit IgG in phosphate buffered saline (without Mg ²⁺ and Ca ²⁺), pH 7.4, 150mM NaCl, 0.02% sodium azide and 50% glycerol.
Purification Method	The antibody was affinity-purified from rabbit antiserum by affinity-chromatography using epitope-specific immunogen.
Clonality	Polyclonal
Alias	Dual specificity protein kinase CLK4; EC 2.7.12.1; CDC-like kinase 4; CLK4;
Product Type	Polyclonal Antibody
Immunogen Species	Homo sapiens (Human)
Target Names	CLK4

Image



Western blot analysis of extracts from HT-29 cells, using CLK4 antibody.

Usage

For Research Use Only. Not for use in diagnostic or therapeutic procedures.