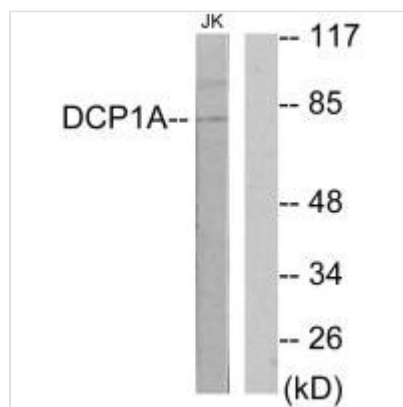




# DCP1A Antibody

|                            |                                                                                                                                                    |
|----------------------------|----------------------------------------------------------------------------------------------------------------------------------------------------|
| <b>Product Code</b>        | CSB-PA111070                                                                                                                                       |
| <b>Storage</b>             | Upon receipt, store at -20°C or -80°C. Avoid repeated freeze.                                                                                      |
| <b>Uniprot No.</b>         | Q9NPI6                                                                                                                                             |
| <b>Immunogen</b>           | Synthesized peptide derived from internal of Human DCP1A.                                                                                          |
| <b>Raised In</b>           | Rabbit                                                                                                                                             |
| <b>Species Reactivity</b>  | Human,Mouse                                                                                                                                        |
| <b>Specificity</b>         | The antibody detects endogenous levels of total DCP1A protein.                                                                                     |
| <b>Tested Applications</b> | ELISA,WB;WB:1:500-1:3000                                                                                                                           |
| <b>Form</b>                | Rabbit IgG in phosphate buffered saline (without Mg <sup>2+</sup> and Ca <sup>2+</sup> ), pH 7.4, 150mM NaCl, 0.02% sodium azide and 50% glycerol. |
| <b>Purification Method</b> | The antibody was affinity-purified from rabbit antiserum by affinity-chromatography using epitope-specific immunogen.                              |
| <b>Clonality</b>           | Polyclonal                                                                                                                                         |
| <b>Alias</b>               | mRNA-decapping enzyme 1A; EC 3.-.-.-; Transcription factor SMIF; Smad4-interacting transcriptional co-activator; DCP1A                             |
| <b>Product Type</b>        | Polyclonal Antibody                                                                                                                                |
| <b>Immunogen Species</b>   | Homo sapiens (Human)                                                                                                                               |
| <b>Target Names</b>        | DCP1A                                                                                                                                              |

## Image



Western blot analysis of extracts from Jurkat cells, using DCP1A antibody.