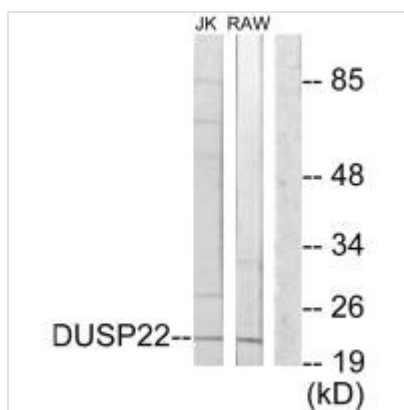




DUSP22 Antibody

Product Code	CSB-PA118593
Storage	Upon receipt, store at -20°C or -80°C. Avoid repeated freeze.
Uniprot No.	Q9NRW4
Immunogen	Synthesized peptide derived from internal of Human DUSP22.
Raised In	Rabbit
Species Reactivity	Human,Mouse
Specificity	The antibody detects endogenous levels of total DUSP22 protein.
Tested Applications	ELISA,WB;WB:1:500-1:3000
Form	Rabbit IgG in phosphate buffered saline (without Mg ²⁺ and Ca ²⁺), pH 7.4, 150mM NaCl, 0.02% sodium azide and 50% glycerol.
Purification Method	The antibody was affinity-purified from rabbit antiserum by affinity-chromatography using epitope-specific immunogen.
Clonality	Polyclonal
Alias	Dual specificity protein phosphatase 22;JNK-stimulatory phosphatase-1;JSP-1;Mitogen-activated protein kinase phosphatase x;DUSP22;JSP1;LMWDSP2;MKPX
Product Type	Polyclonal Antibody
Immunogen Species	Homo sapiens (Human)
Target Names	DUSP22

Image



Western blot analysis of extracts from Jurkat cells and RAW264.7 cells, using DUSP22 antibody.

Usage For Research Use Only. Not for use in diagnostic or therapeutic procedures.