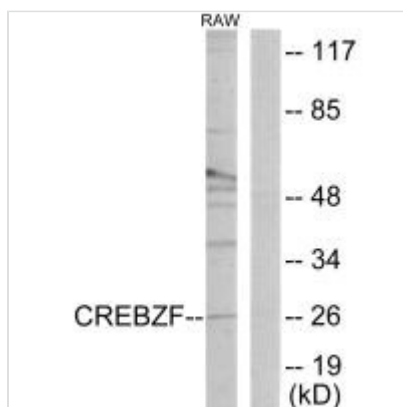




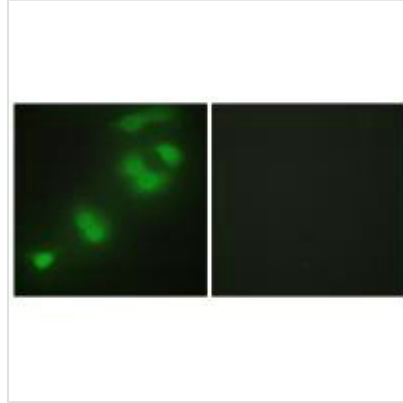
CREBZF Antibody

Product Code	CSB-PA035026
Storage	Upon receipt, store at -20°C or -80°C. Avoid repeated freeze.
Uniprot No.	Q9NS37
Immunogen	Synthesized peptide derived from internal of Human CREBZF.
Raised In	Rabbit
Species Reactivity	Human,Mouse
Specificity	The antibody detects endogenous levels of total CREBZF protein.
Tested Applications	ELISA,WB,IF;WB:1:500-1:3000,IF:1:100-1:500
Form	Rabbit IgG in phosphate buffered saline (without Mg ²⁺ and Ca ²⁺), pH 7.4, 150mM NaCl, 0.02% sodium azide and 50% glycerol.
Purification Method	The antibody was affinity-purified from rabbit antiserum by affinity-chromatography using epitope-specific immunogen.
Clonality	Polyclonal
Alias	CREB/ATF bZIP transcription factor; Host cell factor-binding transcription factor Zhangfei; HCF-binding transcription factor Zhangfei; CREBZF; ZF
Product Type	Polyclonal Antibody
Immunogen Species	Homo sapiens (Human)
Target Names	CREBZF

Image



Western blot analysis of extracts from RAW264.7 cells, using CREBZF antibody.



Immunofluorescence analysis of HepG2 cells, using CREBZF antibody.

Usage

For Research Use Only. Not for use in diagnostic or therapeutic procedures.