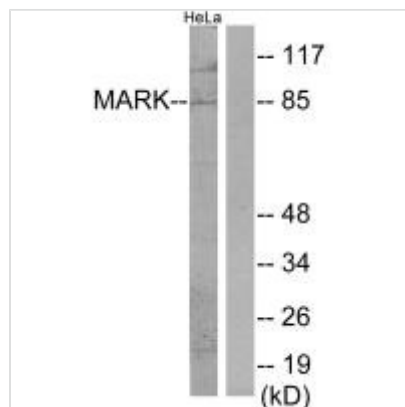




MARK1 Antibody

Product Code	CSB-PA219426
Storage	Upon receipt, store at -20°C or -80°C. Avoid repeated freeze.
Uniprot No.	Q9P0L2
Immunogen	Synthesized peptide derived from internal of Human MARK.
Raised In	Rabbit
Species Reactivity	Human,Mouse,Rat
Specificity	The antibody detects endogenous levels of total MARK protein.
Tested Applications	ELISA,WB;WB:1:500-1:3000
Form	Rabbit IgG in phosphate buffered saline (without Mg ²⁺ and Ca ²⁺), pH 7.4, 150mM NaCl, 0.02% sodium azide and 50% glycerol.
Purification Method	The antibody was affinity-purified from rabbit antiserum by affinity-chromatography using epitope-specific immunogen.
Clonality	Polyclonal
Alias	EC 2.7.11.1; MAP/microtubule affinity-regulating kinase 1; MARK;
Product Type	Polyclonal Antibody
Immunogen Species	Homo sapiens (Human)
Target Names	MARK1

Image



Western blot analysis of extracts from HeLa cells, using MARK antibody.

Usage For Research Use Only. Not for use in diagnostic or therapeutic procedures.