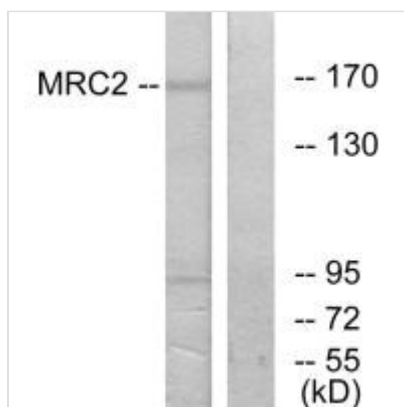




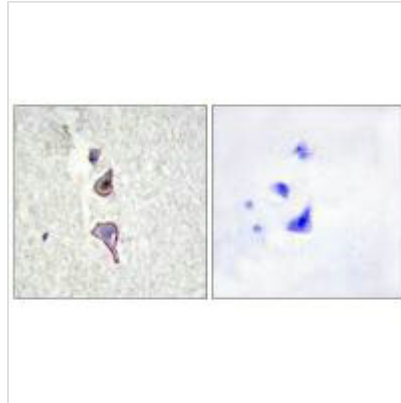
MRC2 Antibody

Product Code	CSB-PA561662
Storage	Upon receipt, store at -20°C or -80°C. Avoid repeated freeze.
Uniprot No.	Q9UBG0
Immunogen	Synthesized peptide derived from internal of Human MRC2.
Raised In	Rabbit
Species Reactivity	Human,Mouse,Rat
Specificity	The antibody detects endogenous levels of total MRC2 protein.
Tested Applications	ELISA,WB,IHC,IF;WB:1:500-1:3000,IHC:1:50-1:100,IF:1:100-1:500
Form	Rabbit IgG in phosphate buffered saline (without Mg ²⁺ and Ca ²⁺), pH 7.4, 150mM NaCl, 0.02% sodium azide and 50% glycerol.
Purification Method	The antibody was affinity-purified from rabbit antiserum by affinity-chromatography using epitope-specific immunogen.
Clonality	Polyclonal
Alias	Macrophage mannose receptor 2 [Precursor]; Urokinase receptor-associated protein; Endocytic receptor 180; CD280 antigen; MRC2
Product Type	Polyclonal Antibody
Immunogen Species	Homo sapiens (Human)
Target Names	MRC2

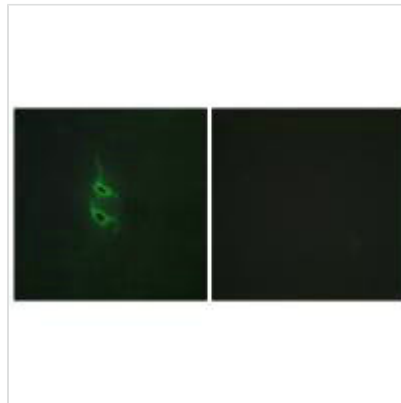
Image



Western blot analysis of extracts from 293 cells, using MRC2 antibody.



Immunohistochemistry analysis of paraffin-embedded human brain tissue using MRC2 antibody.



Immunofluorescence analysis of HepG2 cells, using MRC2 antibody.

Usage

For Research Use Only. Not for use in diagnostic or therapeutic procedures.