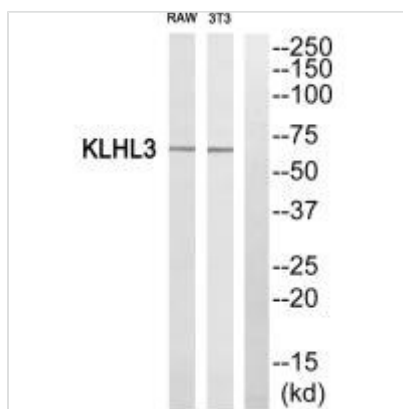




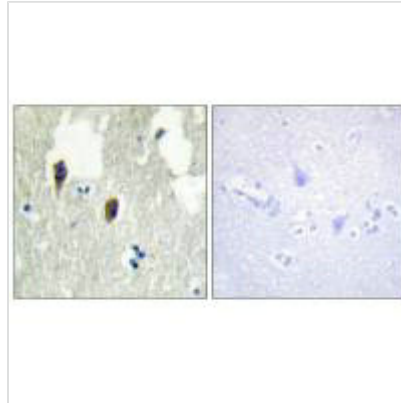
KLHL3 Antibody

Product Code	CSB-PA241944
Storage	Upon receipt, store at -20°C or -80°C. Avoid repeated freeze.
Uniprot No.	Q9UH77
Immunogen	Synthesized peptide derived from N-terminal of Human KLHL3.
Raised In	Rabbit
Species Reactivity	Human
Specificity	The antibody detects endogenous levels of total KLHL3 protein.
Tested Applications	ELISA,WB,IHC,IF;WB:1:500-1:3000,IHC:1:50-1:100,IF:1:100-1:500
Form	Rabbit IgG in phosphate buffered saline (without Mg ²⁺ and Ca ²⁺), pH 7.4, 150mM NaCl, 0.02% sodium azide and 50% glycerol.
Purification Method	The antibody was affinity-purified from rabbit antiserum by affinity-chromatography using epitope-specific immunogen.
Clonality	Polyclonal
Alias	Kelch-like protein 3; KIAA1129;
Product Type	Polyclonal Antibody
Immunogen Species	Homo sapiens (Human)
Target Names	KLHL3

Image



Western blot analysis of extracts from RAW264.7 cells and 3T3 cells, using KLHL3 antibody.



Immunohistochemistry analysis of paraffin-embedded human brain tissue, using KLHL3 antibody.



Immunofluorescence analysis of A549 cells, using KLHL3 antibody.

Usage

For Research Use Only. Not for use in diagnostic or therapeutic procedures.