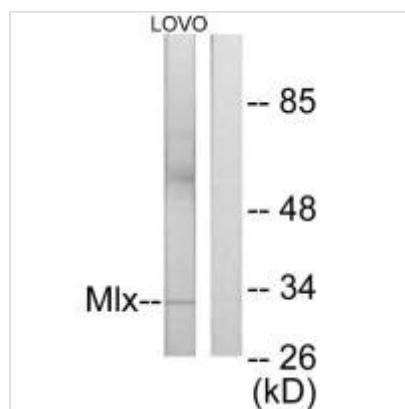




MLX Antibody

Product Code	CSB-PA227729
Storage	Upon receipt, store at -20°C or -80°C. Avoid repeated freeze.
Uniprot No.	Q9UH92
Immunogen	Synthesized peptide derived from internal of Human Mlx.
Raised In	Rabbit
Species Reactivity	Human,Mouse,Rat
Specificity	The antibody detects endogenous levels of total Mlx protein.
Tested Applications	ELISA,WB;WB:1:500-1:3000
Form	Rabbit IgG in phosphate buffered saline (without Mg ²⁺ and Ca ²⁺), pH 7.4, 150mM NaCl, 0.02% sodium azide and 50% glycerol.
Purification Method	The antibody was affinity-purified from rabbit antiserum by affinity-chromatography using epitope-specific immunogen.
Clonality	Polyclonal
Alias	BigMax protein; MAD7; MXD7; Max-like bHLHZip protein; Max-like protein X
Product Type	Polyclonal Antibody
Immunogen Species	Homo sapiens (Human)
Target Names	MLX

Image



Western blot analysis of extracts from LOVO cells, using Mlx antibody.