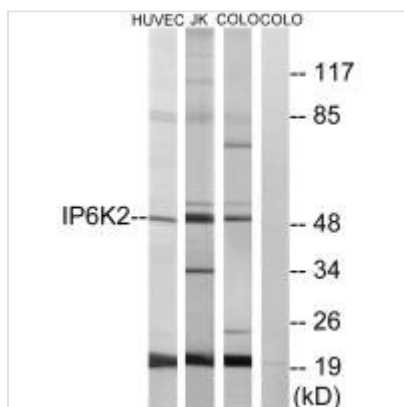




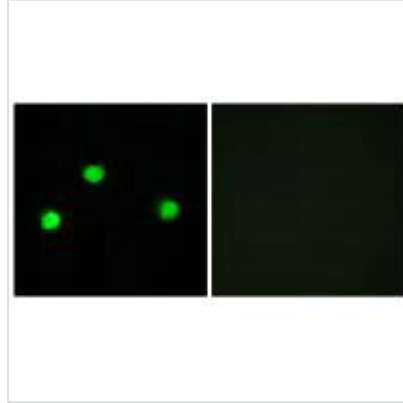
IP6K2 Antibody

Product Code	CSB-PA109004
Storage	Upon receipt, store at -20°C or -80°C. Avoid repeated freeze.
Uniprot No.	Q9UHH9
Immunogen	Synthesized peptide derived from internal of Human IP6K2.
Raised In	Rabbit
Species Reactivity	Human,Mouse,Rat
Specificity	The antibody detects endogenous levels of total IP6K2 protein.
Tested Applications	ELISA,WB,IF;WB:1:500-1:3000,IF:1:100-1:500
Form	Rabbit IgG in phosphate buffered saline (without Mg ²⁺ and Ca ²⁺), pH 7.4, 150mM NaCl, 0.02% sodium azide and 50% glycerol.
Purification Method	The antibody was affinity-purified from rabbit antiserum by affinity-chromatography using epitope-specific immunogen.
Clonality	Polyclonal
Alias	EC 2.7.4.21; IP6K2; Inositol hexakisphosphate kinase 2; InsP6 kinase 2; P(i)-uptake stimulator
Product Type	Polyclonal Antibody
Immunogen Species	Homo sapiens (Human)
Target Names	IP6K2

Image



Western blot analysis of extracts from HUVEC cells, Jurkat cells and COLO cells, using IP6K2 antibody.



Immunofluorescence analysis of COS-7 cells, using IP6K2 antibody.

Usage

For Research Use Only. Not for use in diagnostic or therapeutic procedures.