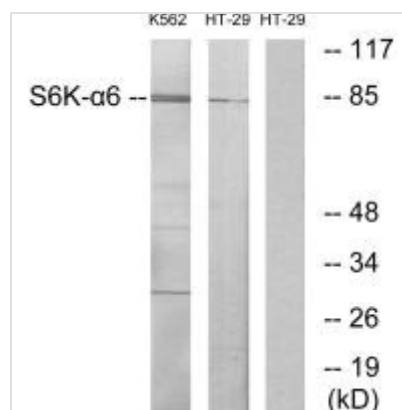




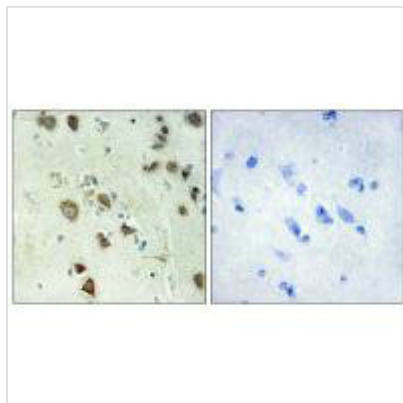
RPS6KA6 Antibody

Product Code	CSB-PA044834
Storage	Upon receipt, store at -20°C or -80°C. Avoid repeated freeze.
Uniprot No.	Q9UK32
Immunogen	Synthesized peptide derived from internal of Human S6K- α 6.
Raised In	Rabbit
Species Reactivity	Human
Specificity	The antibody detects endogenous levels of total S6K- α 6 protein.
Tested Applications	ELISA, WB, IHC; WB: 1:500-1:3000, IHC: 1:50-1:100
Form	Rabbit IgG in phosphate buffered saline (without Mg ²⁺ and Ca ²⁺), pH 7.4, 150mM NaCl, 0.02% sodium azide and 50% glycerol.
Purification Method	The antibody was affinity-purified from rabbit antiserum by affinity-chromatography using epitope-specific immunogen.
Clonality	Polyclonal
Alias	90 kDa ribosomal protein S6 kinase 6; EC 2.7.1.37; EC 2.7.11.1; KS6A6; RPS6KA6
Product Type	Polyclonal Antibody
Immunogen Species	Homo sapiens (Human)
Target Names	RPS6KA6

Image



Western blot analysis of extracts from K562 cells and HT-29 cells, using S6K- α 6 antibody.



Immunohistochemistry analysis of paraffin-embedded human brain tissue using S6K- α 6 antibody.

Usage

For Research Use Only. Not for use in diagnostic or therapeutic procedures.