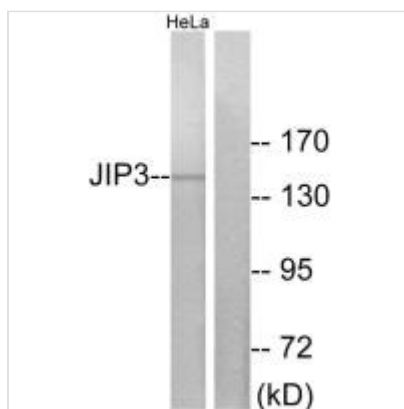




MAPK8IP3 Antibody

Product Code	CSB-PA122039
Storage	Upon receipt, store at -20°C or -80°C. Avoid repeated freeze.
Uniprot No.	Q9UPT6
Immunogen	Synthesized peptide derived from internal of Human JIP3.
Raised In	Rabbit
Species Reactivity	Human,Mouse
Specificity	The antibody detects endogenous levels of total JIP3 protein.
Tested Applications	ELISA,WB,IF;WB:1:500-1:3000,IF:1:100-1:500
Form	Rabbit IgG in phosphate buffered saline (without Mg ²⁺ and Ca ²⁺), pH 7.4, 150mM NaCl, 0.02% sodium azide and 50% glycerol.
Purification Method	The antibody was affinity-purified from rabbit antiserum by affinity-chromatography using epitope-specific immunogen.
Clonality	Polyclonal
Alias	C-jun-amino-terminal kinase interacting protein 3; JIP-3; JIP3; JNK MAP kinase scaffold protein 3; JNK-interacting protein 3
Product Type	Polyclonal Antibody
Immunogen Species	Homo sapiens (Human)
Target Names	MAPK8IP3

Image



Western blot analysis of extracts from HeLa cells, using JIP3 antibody.



Immunofluorescence analysis of HeLa cells, using JIP3 antibody.

Usage

For Research Use Only. Not for use in diagnostic or therapeutic procedures.