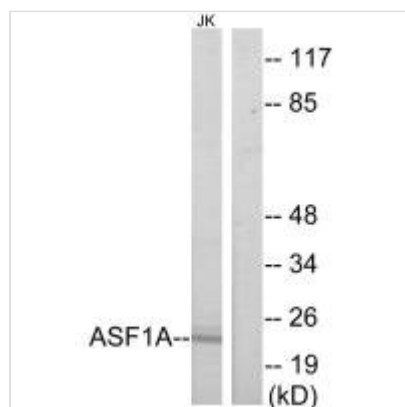




ASF1A Antibody

Product Code	CSB-PA447721
Storage	Upon receipt, store at -20°C or -80°C. Avoid repeated freeze.
Uniprot No.	Q9Y294
Immunogen	Synthesized peptide derived from internal of Human ASF1A.
Raised In	Rabbit
Species Reactivity	Human,Mouse
Specificity	The antibody detects endogenous levels of total ASF1A protein.
Tested Applications	ELISA,WB;WB:1:500-1:3000
Form	Rabbit IgG in phosphate buffered saline (without Mg ²⁺ and Ca ²⁺), pH 7.4, 150mM NaCl, 0.02% sodium azide and 50% glycerol.
Purification Method	The antibody was affinity-purified from rabbit antiserum by affinity-chromatography using epitope-specific immunogen.
Clonality	Polyclonal
Alias	Histone chaperone ASF1A; Anti-silencing function protein 1 homolog A; hAsf1; hAsf1a; CCG1-interacting factor A
Product Type	Polyclonal Antibody
Immunogen Species	Homo sapiens (Human)
Target Names	ASF1A

Image



Western blot analysis of extracts from Jurkat cells, using ASF1A antibody.