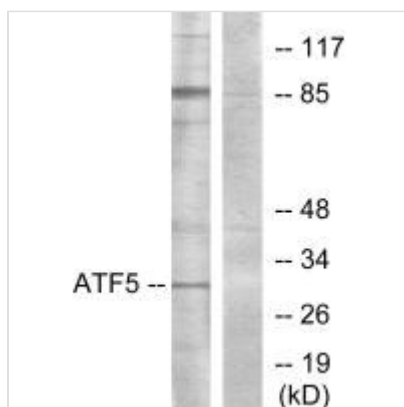




ATF5 Antibody

Product Code	CSB-PA155215
Storage	Upon receipt, store at -20°C or -80°C. Avoid repeated freeze.
Uniprot No.	Q9Y2D1
Immunogen	Synthesized peptide derived from internal of Human ATF5.
Raised In	Rabbit
Species Reactivity	Human,Mouse,Rat
Specificity	The antibody detects endogenous levels of total ATF5 protein.
Tested Applications	ELISA,WB;WB:1:500-1:3000
Form	Rabbit IgG in phosphate buffered saline (without Mg ²⁺ and Ca ²⁺), pH 7.4, 150mM NaCl, 0.02% sodium azide and 50% glycerol.
Purification Method	The antibody was affinity-purified from rabbit antiserum by affinity-chromatography using epitope-specific immunogen.
Clonality	Polyclonal
Alias	Cyclic AMP-dependent transcription factor ATF-5; Activating transcription factor 5; Transcription factor ATFx; ATF5; ATFX
Product Type	Polyclonal Antibody
Immunogen Species	Homo sapiens (Human)
Target Names	ATF5

Image



Western blot analysis of extracts from Jurkat cells, using ATF5 antibody.

Usage

For Research Use Only. Not for use in diagnostic or therapeutic procedures.