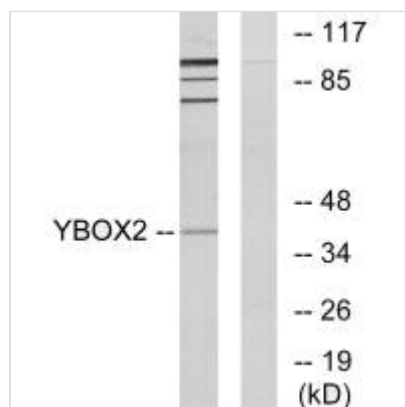




YBX2 Antibody

Product Code	CSB-PA098057
Storage	Upon receipt, store at -20°C or -80°C. Avoid repeated freeze.
Uniprot No.	Q9Y2T7
Immunogen	Synthesized peptide derived from internal of Human YBOX2.
Raised In	Rabbit
Species Reactivity	Human,Mouse
Specificity	The antibody detects endogenous levels of total YBOX2 protein.
Tested Applications	ELISA,WB;WB:1:500-1:3000
Form	Rabbit IgG in phosphate buffered saline (without Mg ²⁺ and Ca ²⁺), pH 7.4, 150mM NaCl, 0.02% sodium azide and 50% glycerol.
Purification Method	The antibody was affinity-purified from rabbit antiserum by affinity-chromatography using epitope-specific immunogen.
Clonality	Polyclonal
Alias	Y-box-binding protein 2; Germ cell-specific Y-box-binding protein; Contrin; MSY2 homolog; YBX2
Product Type	Polyclonal Antibody
Immunogen Species	Homo sapiens (Human)
Target Names	YBX2

Image



Western blot analysis of extracts from COLO205 cells, using YBOX2 antibody.