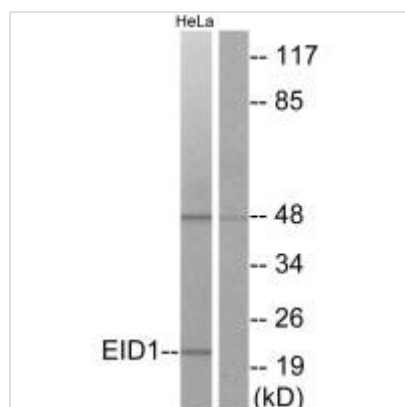




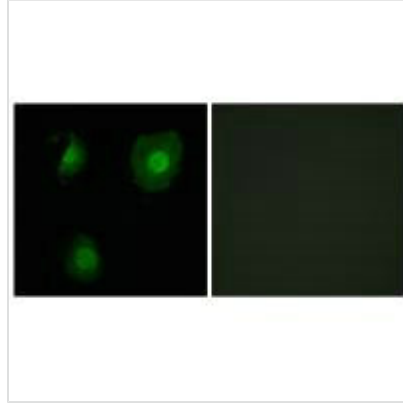
EID1 Antibody

Product Code	CSB-PA855006
Storage	Upon receipt, store at -20°C or -80°C. Avoid repeated freeze.
Uniprot No.	Q9Y6B2
Immunogen	Synthesized peptide derived from internal of Human EID1.
Raised In	Rabbit
Species Reactivity	Human
Specificity	The antibody detects endogenous levels of total EID1 protein.
Tested Applications	ELISA,WB,IF;WB:1:500-1:3000,IF:1:100-1:500
Form	Rabbit IgG in phosphate buffered saline (without Mg ²⁺ and Ca ²⁺), pH 7.4, 150mM NaCl, 0.02% sodium azide and 50% glycerol.
Purification Method	The antibody was affinity-purified from rabbit antiserum by affinity-chromatography using epitope-specific immunogen.
Clonality	Polyclonal
Alias	EP300-interacting inhibitor of differentiation 1; EID-1; E1A-like inhibitor of differentiation 1; CREBBP/EP300 inhibitory protein 1; 21 kDa pRb-associated protein
Product Type	Polyclonal Antibody
Immunogen Species	Homo sapiens (Human)
Target Names	EID1

Image



Western blot analysis of extracts from HeLa cells, using EID1 antibody.



Immunofluorescence analysis of A549 cells, using EID1 antibody.

Usage

For Research Use Only. Not for use in diagnostic or therapeutic procedures.