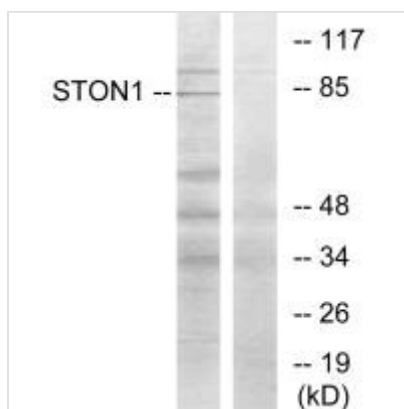




STON1 Antibody

Product Code	CSB-PA233173
Storage	Upon receipt, store at -20°C or -80°C. Avoid repeated freeze.
Uniprot No.	Q9Y6Q2
Immunogen	Synthesized peptide derived from C-terminal of Human STON1.
Raised In	Rabbit
Species Reactivity	Human
Specificity	The antibody detects endogenous levels of total STON1 protein.
Tested Applications	ELISA, WB; WB: 1:500-1:3000
Form	Rabbit IgG in phosphate buffered saline (without Mg ²⁺ and Ca ²⁺), pH 7.4, 150mM NaCl, 0.02% sodium azide and 50% glycerol.
Purification Method	The antibody was affinity-purified from rabbit antiserum by affinity-chromatography using epitope-specific immunogen.
Clonality	Polyclonal
Alias	SBLF; STN1; stoned B/TFIIA-alpha/beta-like factor; STON1; stoned B-like factor
Product Type	Polyclonal Antibody
Immunogen Species	Homo sapiens (Human)
Target Names	STON1

Image



Western blot analysis of extracts from K562 cells, using STON1 antibody.

Usage

For Research Use Only. Not for use in diagnostic or therapeutic procedures.