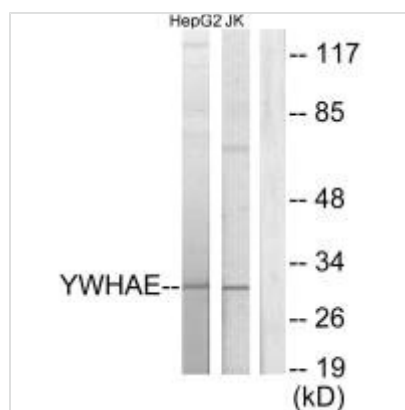




YWHAE Antibody

Product Code	CSB-PA205505
Storage	Upon receipt, store at -20°C or -80°C. Avoid repeated freeze.
Uniprot No.	P62258
Immunogen	Synthesized peptide derived from C-terminal of Human 14-3-3 ε.
Raised In	Rabbit
Species Reactivity	Human,Mouse,Rat
Specificity	The antibody detects endogenous levels of total 14-3-3 ε protein.
Tested Applications	ELISA,WB;WB:1:500-1:3000
Form	Rabbit IgG in phosphate buffered saline (without Mg ²⁺ and Ca ²⁺), pH 7.4, 150mM NaCl, 0.02% sodium azide and 50% glycerol.
Purification Method	The antibody was affinity-purified from rabbit antiserum by affinity-chromatography using epitope-specific immunogen.
Clonality	Polyclonal
Alias	14-3-3E; 143E; KCIP-1; Mitochondrial import stimulation factor L subunit; Protein kinase C inhibitor protein-1
Product Type	Polyclonal Antibody
Immunogen Species	Homo sapiens (Human)
Target Names	YWHAE

Image



Western blot analysis of extracts from HepG2 cells and Jurkat cells, using 14-3-3 ε antibody.

Usage For Research Use Only. Not for use in diagnostic or therapeutic procedures.