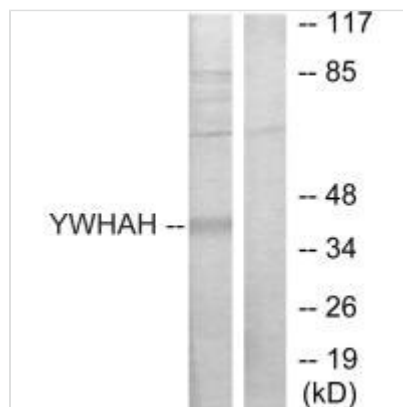




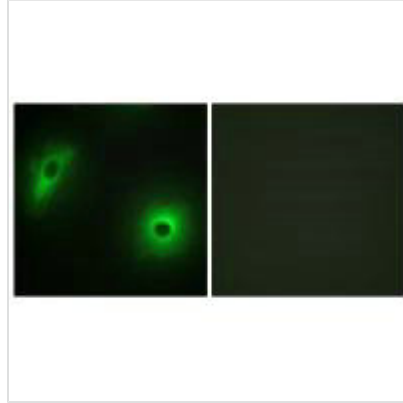
YWHAH Antibody

Product Code	CSB-PA213006
Storage	Upon receipt, store at -20°C or -80°C. Avoid repeated freeze.
Uniprot No.	Q04917
Immunogen	Synthesized peptide derived from internal of Human 14-3-3 η.
Raised In	Rabbit
Species Reactivity	Human,Mouse,Rat
Specificity	The antibody detects endogenous levels of total 14-3-3 η protein.
Tested Applications	ELISA,WB,IF;WB:1:500-1:3000,IF:1:100-1:500
Form	Rabbit IgG in phosphate buffered saline (without Mg ²⁺ and Ca ²⁺), pH 7.4, 150mM NaCl, 0.02% sodium azide and 50% glycerol.
Purification Method	The antibody was affinity-purified from rabbit antiserum by affinity-chromatography using epitope-specific immunogen.
Clonality	Polyclonal
Alias	14-3-3 protein eta; Protein AS1; YWHAH; YWHA1;
Product Type	Polyclonal Antibody
Immunogen Species	Homo sapiens (Human)
Target Names	YWHAH

Image



Western blot analysis of extracts from Jurkat cells, using 14-3-3 η antibody.



Immunofluorescence analysis of HeLa cells, using 14-3-3 η antibody.

Usage

For Research Use Only. Not for use in diagnostic or therapeutic procedures.