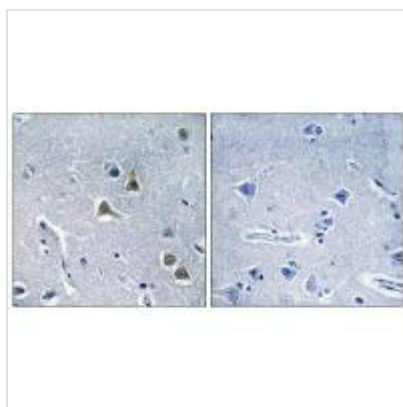




ARRDC2 Antibody

Product Code	CSB-PA146278
Storage	Upon receipt, store at -20°C or -80°C. Avoid repeated freeze.
Uniprot No.	Q8TBH0
Immunogen	Synthesized peptide derived from internal of Human ARRDC2.
Raised In	Rabbit
Species Reactivity	Human, Mouse
Specificity	The antibody detects endogenous levels of total ARRDC2 protein.
Tested Applications	ELISA, IHC; IHC: 1:50-1:100
Form	Rabbit IgG in phosphate buffered saline (without Mg ²⁺ and Ca ²⁺), pH 7.4, 150mM NaCl, 0.02% sodium azide and 50% glycerol.
Purification Method	The antibody was affinity-purified from rabbit antiserum by affinity-chromatography using epitope-specific immunogen.
Clonality	Polyclonal
Alias	Arrestin domain-containing protein 2; ARRDC2; PP2703;
Product Type	Polyclonal Antibody
Immunogen Species	Homo sapiens (Human)
Target Names	ARRDC2

Image



Immunohistochemistry analysis of paraffin-embedded human brain tissue, using ARRDC2 antibody.

Usage

For Research Use Only. Not for use in diagnostic or therapeutic procedures.