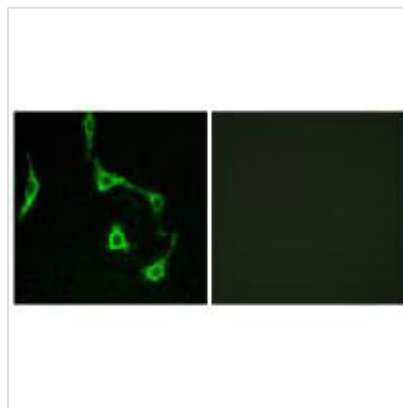




CDH10 Antibody

Product Code	CSB-PA295121
Storage	Upon receipt, store at -20°C or -80°C. Avoid repeated freeze.
Uniprot No.	Q9Y6N8
Immunogen	Synthesized peptide derived from internal of Human CDH10.
Raised In	Rabbit
Species Reactivity	Human, Mouse
Specificity	The antibody detects endogenous levels of total CDH10 protein.
Tested Applications	ELISA, IF; IF: 1:100-1:500
Form	Rabbit IgG in phosphate buffered saline (without Mg ²⁺ and Ca ²⁺), pH 7.4, 150mM NaCl, 0.02% sodium azide and 50% glycerol.
Purification Method	The antibody was affinity-purified from rabbit antiserum by affinity-chromatography using epitope-specific immunogen.
Clonality	Polyclonal
Alias	CAD10; Cadherin-10; T2-cadherin; CDH10;
Product Type	Polyclonal Antibody
Immunogen Species	Homo sapiens (Human)
Target Names	CDH10

Image



Immunofluorescence analysis of LOVO cells, using CDH10 antibody.

Usage

For Research Use Only. Not for use in diagnostic or therapeutic procedures.