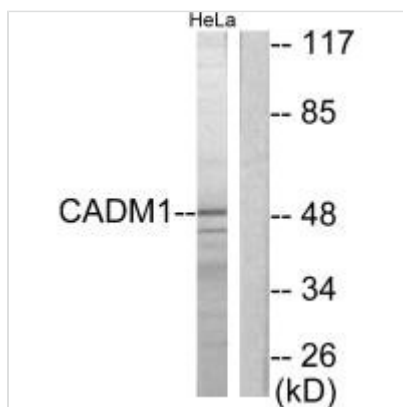




CADM1 Antibody

Product Code	CSB-PA112392
Storage	Upon receipt, store at -20°C or -80°C. Avoid repeated freeze.
Uniprot No.	Q9BY67
Immunogen	Synthesized peptide derived from C-terminal of Human CADM1.
Raised In	Rabbit
Species Reactivity	Human, Mouse
Specificity	The antibody detects endogenous levels of total CADM1 protein.
Tested Applications	ELISA, WB; WB: 1:500-1:3000
Form	Rabbit IgG in phosphate buffered saline (without Mg ²⁺ and Ca ²⁺), pH 7.4, 150mM NaCl, 0.02% sodium azide and 50% glycerol.
Purification Method	The antibody was affinity-purified from rabbit antiserum by affinity-chromatography using epitope-specific immunogen.
Clonality	Polyclonal
Alias	Cell adhesion molecule 1 [Precursor]; Immunoglobulin superfamily member 4; Nectin-like protein 2; NECL-2; Tumor suppressor in lung cancer 1
Product Type	Polyclonal Antibody
Immunogen Species	Homo sapiens (Human)
Target Names	CADM1

Image



Western blot analysis of extracts from HeLa cells, using CADM1 antibody.

Usage For Research Use Only. Not for use in diagnostic or therapeutic procedures.