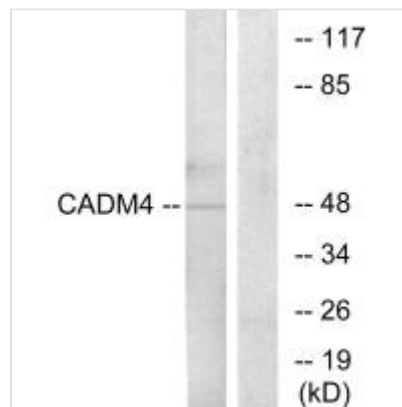




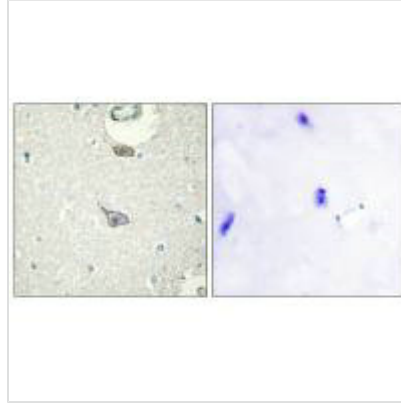
CADM4 Antibody

Product Code	CSB-PA207693
Storage	Upon receipt, store at -20°C or -80°C. Avoid repeated freeze.
Uniprot No.	Q8NFZ8
Immunogen	Synthesized peptide derived from internal of Human CADM4.
Raised In	Rabbit
Species Reactivity	Human,Mouse,Rat
Specificity	The antibody detects endogenous levels of total CADM4 protein.
Tested Applications	ELISA,WB,IHC,IF;WB:1:500-1:3000,IHC:1:50-1:100,IF:1:100-1:500
Form	Rabbit IgG in phosphate buffered saline (without Mg ²⁺ and Ca ²⁺), pH 7.4, 150mM NaCl, 0.02% sodium azide and 50% glycerol.
Purification Method	The antibody was affinity-purified from rabbit antiserum by affinity-chromatography using epitope-specific immunogen.
Clonality	Polyclonal
Alias	Cell adhesion molecule 4 [Precursor]; Immunoglobulin superfamily member 4C; Nectin-like protein 4; TSLC1-like protein 2; CADM4
Product Type	Polyclonal Antibody
Immunogen Species	Homo sapiens (Human)
Target Names	CADM4

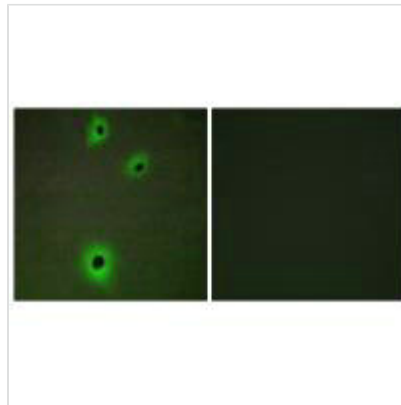
Image



Western blot analysis of extracts from RAW264.7 cells, using CADM4 antibody.



Immunohistochemistry analysis of paraffin-embedded human brain tissue using CADM4 antibody.



Immunofluorescence analysis of A549 cells, using CADM4 antibody.

Usage

For Research Use Only. Not for use in diagnostic or therapeutic procedures.