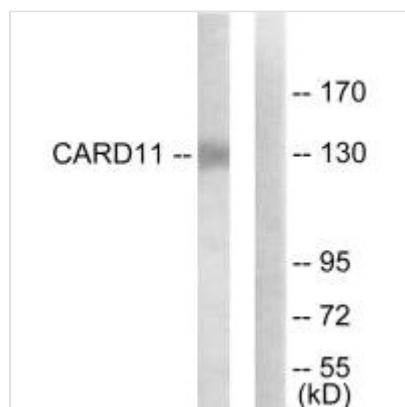




CARD11 Antibody

Product Code	CSB-PA929379
Storage	Upon receipt, store at -20°C or -80°C. Avoid repeated freeze.
Uniprot No.	Q9BXL7
Immunogen	Synthesized peptide derived from internal of Human CARD11.
Raised In	Rabbit
Species Reactivity	Human,Mouse
Specificity	The antibody detects endogenous levels of total CARD11 protein.
Tested Applications	ELISA,WB;WB:1:500-1:3000
Form	Rabbit IgG in phosphate buffered saline (without Mg ²⁺ and Ca ²⁺), pH 7.4, 150mM NaCl, 0.02% sodium azide and 50% glycerol.
Purification Method	The antibody was affinity-purified from rabbit antiserum by affinity-chromatography using epitope-specific immunogen.
Clonality	Polyclonal
Alias	Caspase recruitment domain-containing protein 11; CARD-containing MAGUK protein 3; Carma 1; CARD11; CARMA1
Product Type	Polyclonal Antibody
Immunogen Species	Homo sapiens (Human)
Target Names	CARD11

Image



Western blot analysis of extracts from COLO205 cells, using CARD11 antibody.