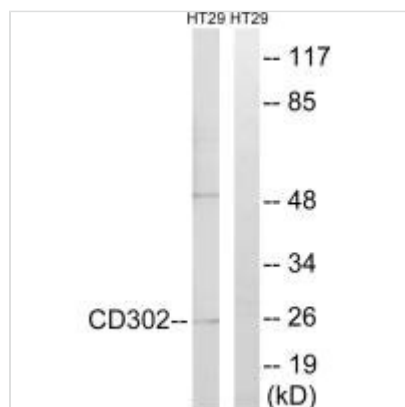




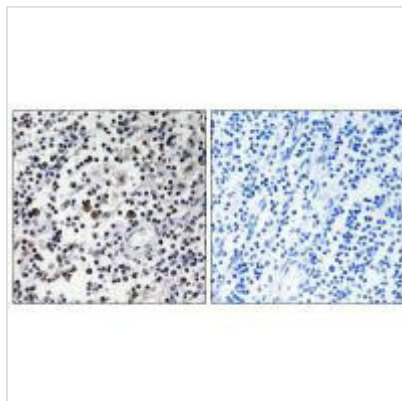
CD302 Antibody

Product Code	CSB-PA953444
Storage	Upon receipt, store at -20°C or -80°C. Avoid repeated freeze.
Uniprot No.	Q8IX05
Immunogen	Synthesized peptide derived from internal of Human CD302.
Raised In	Rabbit
Species Reactivity	Human,Mouse,Rat
Specificity	The antibody detects endogenous levels of total CD302 protein.
Tested Applications	ELISA,WB,IHC;WB:1:500-1:3000,IHC:1:50-1:100
Form	Rabbit IgG in phosphate buffered saline (without Mg ²⁺ and Ca ²⁺), pH 7.4, 150mM NaCl, 0.02% sodium azide and 50% glycerol.
Purification Method	The antibody was affinity-purified from rabbit antiserum by affinity-chromatography using epitope-specific immunogen.
Clonality	Polyclonal
Alias	CD302 antigen [Precursor]; C-type lectin domain family 13 member A; C-type lectin BIMLEC; Type I transmembrane C-type lectin receptor DCL-1; CD302
Product Type	Polyclonal Antibody
Immunogen Species	Homo sapiens (Human)
Target Names	CD302

Image



Western blot analysis of extracts from HT-29 cells, using CD302 antibody.



Immunohistochemistry analysis of paraffin-embedded human lymph node tissue using CD302 antibody.