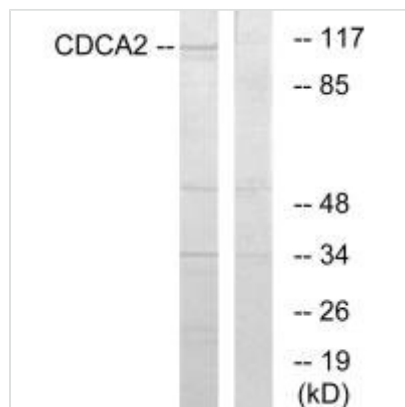




CDCA2 Antibody

Product Code	CSB-PA124174
Storage	Upon receipt, store at -20°C or -80°C. Avoid repeated freeze.
Uniprot No.	Q69YH5
Immunogen	Synthesized peptide derived from C-terminal of Human CDCA2.
Raised In	Rabbit
Species Reactivity	Human
Specificity	The antibody detects endogenous levels of total CDCA2 protein.
Tested Applications	ELISA, WB; WB: 1:500-1:3000
Form	Rabbit IgG in phosphate buffered saline (without Mg ²⁺ and Ca ²⁺), pH 7.4, 150mM NaCl, 0.02% sodium azide and 50% glycerol.
Purification Method	The antibody was affinity-purified from rabbit antiserum by affinity-chromatography using epitope-specific immunogen.
Clonality	Polyclonal
Alias	FLJ25804; MGC129906; MGC129907; cell division cycle associated 2;
Product Type	Polyclonal Antibody
Immunogen Species	Homo sapiens (Human)
Target Names	CDCA2

Image



Western blot analysis of extracts from 293 cells, using CDCA2 antibody.

Usage

For Research Use Only. Not for use in diagnostic or therapeutic procedures.