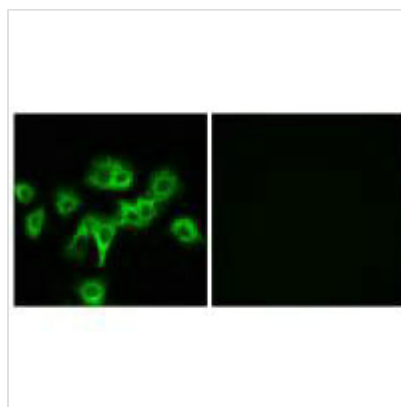




CDON Antibody

Product Code	CSB-PA242369
Storage	Upon receipt, store at -20°C or -80°C. Avoid repeated freeze.
Uniprot No.	Q4KMG0
Immunogen	Synthesized peptide derived from internal of Human CDON.
Raised In	Rabbit
Species Reactivity	Human
Specificity	The antibody detects endogenous levels of total CDON protein.
Tested Applications	ELISA,IF;IF:1:100-1:500
Form	Rabbit IgG in phosphate buffered saline (without Mg ²⁺ and Ca ²⁺), pH 7.4, 150mM NaCl, 0.02% sodium azide and 50% glycerol.
Purification Method	The antibody was affinity-purified from rabbit antiserum by affinity-chromatography using epitope-specific immunogen.
Clonality	Polyclonal
Alias	Cell adhesion molecule-related/down-regulated by oncogenes ; CDON; CDO;
Product Type	Polyclonal Antibody
Immunogen Species	Homo sapiens (Human)
Target Names	CDON

Image



Immunofluorescence analysis of MCF-7 cells, using CDON antibody.

Usage

For Research Use Only. Not for use in diagnostic or therapeutic procedures.