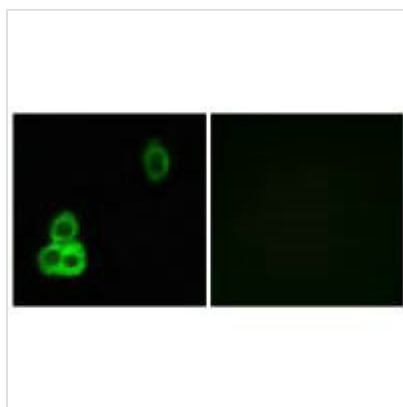




CELSR1 Antibody

Product Code	CSB-PA982432
Storage	Upon receipt, store at -20°C or -80°C. Avoid repeated freeze.
Uniprot No.	Q9NYQ6
Immunogen	Synthesized peptide derived from internal of Human CELSR1.
Raised In	Rabbit
Species Reactivity	Human, Mouse
Specificity	The antibody detects endogenous levels of total CELSR1 protein.
Tested Applications	ELISA, IF; IF: 1:100-1:500
Form	Rabbit IgG in phosphate buffered saline (without Mg ²⁺ and Ca ²⁺), pH 7.4, 150mM NaCl, 0.02% sodium azide and 50% glycerol.
Purification Method	The antibody was affinity-purified from rabbit antiserum by affinity-chromatography using epitope-specific immunogen.
Clonality	Polyclonal
Alias	CDHF9; CELR1; FMI2; ME2; cadherin EGF LAG seven-pass G-type receptor 1
Product Type	Polyclonal Antibody
Immunogen Species	Homo sapiens (Human)
Target Names	CELSR1

Image



Immunofluorescence analysis of MCF-7 cells, using CELSR1 antibody.

Usage

For Research Use Only. Not for use in diagnostic or therapeutic procedures.