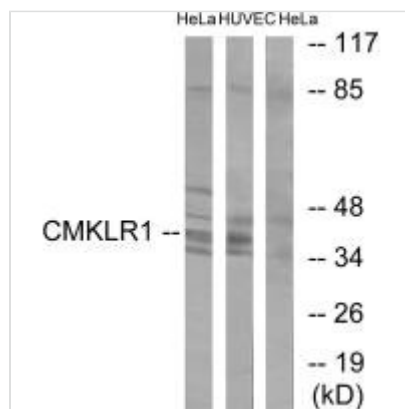




CMKLR1 Antibody

Product Code	CSB-PA140333
Storage	Upon receipt, store at -20°C or -80°C. Avoid repeated freeze.
Uniprot No.	Q99788
Immunogen	Synthesized peptide derived from internal of Human CMKLR1.
Raised In	Rabbit
Species Reactivity	Human,Mouse,Rat
Specificity	The antibody detects endogenous levels of total CMKLR1 protein.
Tested Applications	ELISA,WB;WB:1:500-1:3000
Form	Rabbit IgG in phosphate buffered saline (without Mg ²⁺ and Ca ²⁺), pH 7.4, 150mM NaCl, 0.02% sodium azide and 50% glycerol.
Purification Method	The antibody was affinity-purified from rabbit antiserum by affinity-chromatography using epitope-specific immunogen.
Clonality	Polyclonal
Alias	Chemokine receptor-like 1; G-protein coupled receptor DEZ; G-protein coupled receptor ChemR23; CHEMR23; DEZ
Product Type	Polyclonal Antibody
Immunogen Species	Homo sapiens (Human)
Target Names	CMKLR1

Image



Western blot analysis of extracts from HepG2 cells, HeLa cells and 293 cells, using CMKLR1 antibody.