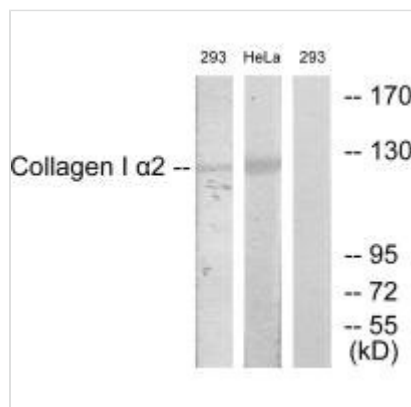




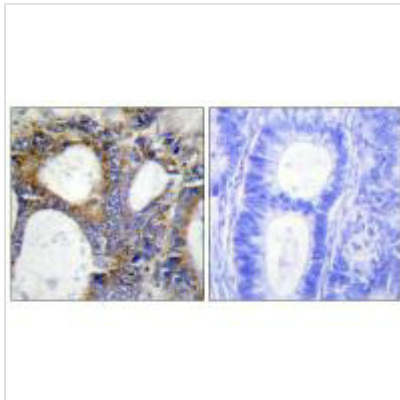
# COL1A2 Antibody

<b>Product Code</b>	CSB-PA571805
<b>Storage</b>	Upon receipt, store at -20°C or -80°C. Avoid repeated freeze.
<b>Uniprot No.</b>	P08123
<b>Immunogen</b>	Synthesized peptide derived from internal of Human Collagen I $\alpha$ 2.
<b>Raised In</b>	Rabbit
<b>Species Reactivity</b>	Human
<b>Specificity</b>	The antibody detects endogenous levels of total Collagen I $\alpha$ 2 protein.
<b>Tested Applications</b>	ELISA, WB, IHC, IF; WB: 1:500-1:3000, IHC: 1:50-1:100, IF: 1:100-1:500
<b>Form</b>	Rabbit IgG in phosphate buffered saline (without Mg <sup>2+</sup> and Ca <sup>2+</sup> ), pH 7.4, 150mM NaCl, 0.02% sodium azide and 50% glycerol.
<b>Purification Method</b>	The antibody was affinity-purified from rabbit antiserum by affinity-chromatography using epitope-specific immunogen.
<b>Clonality</b>	Polyclonal
<b>Alias</b>	Collagen alpha-2(I) chain [Precursor]; Alpha-2 type I collagen; CO1A2;
<b>Product Type</b>	Polyclonal Antibody
<b>Immunogen Species</b>	Homo sapiens (Human)
<b>Target Names</b>	COL1A2

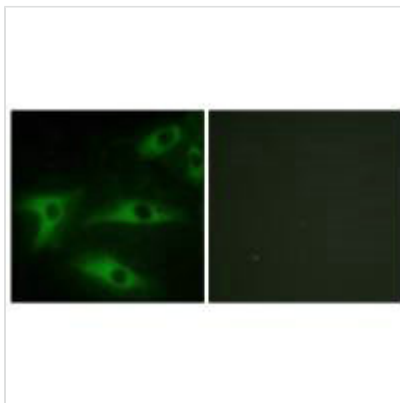
## Image



Western blot analysis of extracts from 293 cells and HeLa cells, using Collagen I  $\alpha$ 2 antibody.



Immunohistochemistry analysis of paraffin-embedded human colon carcinoma tissue using Collagen I  $\alpha$ 2 antibody.



Immunofluorescence analysis of HeLa cells, using Collagen I  $\alpha$ 2 antibody.