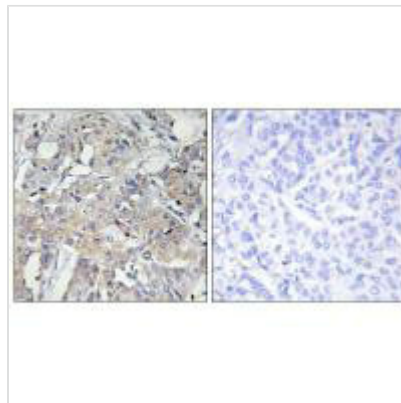




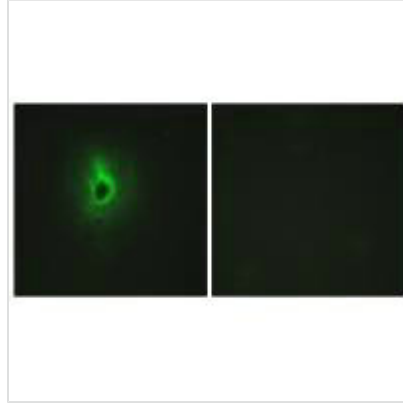
# COL6A3 Antibody

<b>Product Code</b>	CSB-PA053506
<b>Storage</b>	Upon receipt, store at -20°C or -80°C. Avoid repeated freeze.
<b>Uniprot No.</b>	P12111
<b>Immunogen</b>	Synthesized peptide derived from internal of Human Collagen VI $\alpha$ 3.
<b>Raised In</b>	Rabbit
<b>Species Reactivity</b>	Human,Mouse
<b>Specificity</b>	The antibody detects endogenous levels of total Collagen VI $\alpha$ 3 protein.
<b>Tested Applications</b>	ELISA,IHC,IF;IHC:1:50-1:100,IF:1:100-1:500
<b>Relevance</b>	Collagen VI acts as a cell-binding protein.  Chu M.-L., EMBO J. 9:385-393(1990). Zanussi S., J. Biol. Chem. 267:24082-24089(1992). Liu T., J. Proteome Res. 4:2070-2080(2005).
<b>Form</b>	Rabbit IgG in phosphate buffered saline (without Mg <sup>2+</sup> and Ca <sup>2+</sup> ), pH 7.4, 150mM NaCl, 0.02% sodium azide and 50% glycerol.
<b>Purification Method</b>	The antibody was affinity-purified from rabbit antiserum by affinity-chromatography using epitope-specific immunogen.
<b>Clonality</b>	Polyclonal
<b>Alias</b>	Collagen alpha-3(VI) chain; CO6A3;
<b>Product Type</b>	Polyclonal Antibody
<b>Species</b>	Homo sapiens (Human)
<b>Target Names</b>	COL6A3

## Image



Immunohistochemistry analysis of paraffin-embedded human breast carcinoma tissue using Collagen VI  $\alpha$ 3 antibody.



Immunofluorescence analysis of HeLa cells,  
using Collagen VI  $\alpha$ 3 antibody.