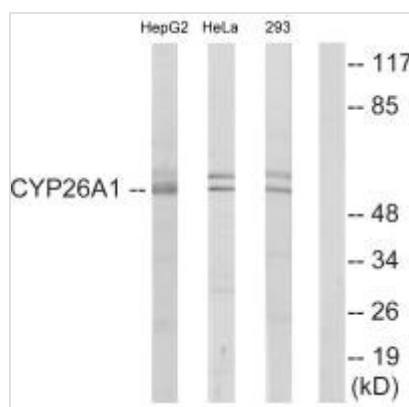




CYP26A1 Antibody

Product Code	CSB-PA288324
Storage	Upon receipt, store at -20°C or -80°C. Avoid repeated freeze.
Uniprot No.	O43174
Immunogen	Synthesized peptide derived from internal of Human Cytochrome P450 26A1.
Raised In	Rabbit
Species Reactivity	Human,Mouse,Rat
Specificity	The antibody detects endogenous levels of total Cytochrome P450 26A1 protein.
Tested Applications	ELISA,WB;WB:1:500-1:3000
Form	Rabbit IgG in phosphate buffered saline (without Mg ²⁺ and Ca ²⁺), pH 7.4, 150mM NaCl, 0.02% sodium azide and 50% glycerol.
Purification Method	The antibody was affinity-purified from rabbit antiserum by affinity-chromatography using epitope-specific immunogen.
Clonality	Polyclonal
Alias	Cytochrome P450 26A1; EC 1.14.-.-; Retinoic acid-metabolizing cytochrome; P450 retinoic acid-inactivating 1; P450RAI
Product Type	Polyclonal Antibody
Immunogen Species	Homo sapiens (Human)
Target Names	CYP26A1

Image



Western blot analysis of extracts from HepG2 cells, HeLa cells and 293 cells, using Cytochrome P450 26A1 antibody.

Usage For Research Use Only. Not for use in diagnostic or therapeutic procedures.