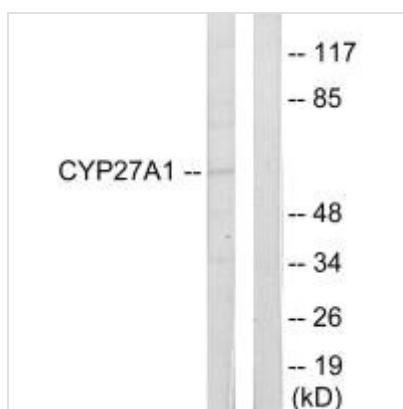




CYP27A1 Antibody

| | |
|----------------------------|--|
| Product Code | CSB-PA695994 |
| Storage | Upon receipt, store at -20°C or -80°C. Avoid repeated freeze. |
| Uniprot No. | Q02318 |
| Immunogen | Synthesized peptide derived from internal of Human Cytochrome P450 27A1. |
| Raised In | Rabbit |
| Species Reactivity | Human |
| Specificity | The antibody detects endogenous levels of total Cytochrome P450 27A1 protein. |
| Tested Applications | ELISA,WB;WB:1:500-1:3000 |
| Form | Rabbit IgG in phosphate buffered saline (without Mg ²⁺ and Ca ²⁺), pH 7.4, 150mM NaCl, 0.02% sodium azide and 50% glycerol. |
| Purification Method | The antibody was affinity-purified from rabbit antiserum by affinity-chromatography using epitope-specific immunogen. |
| Clonality | Polyclonal |
| Alias | 25-hydroxylase; 5-beta-cholestane-3-alpha; 7-alpha; 12-alpha-triol 27-hydroxylase; CP27A |
| Product Type | Polyclonal Antibody |
| Immunogen Species | Homo sapiens (Human) |
| Target Names | CYP27A1 |

Image



Western blot analysis of extracts from HeLa cells, using Cytochrome P450 27A1 antibody.

Usage For Research Use Only. Not for use in diagnostic or therapeutic procedures.