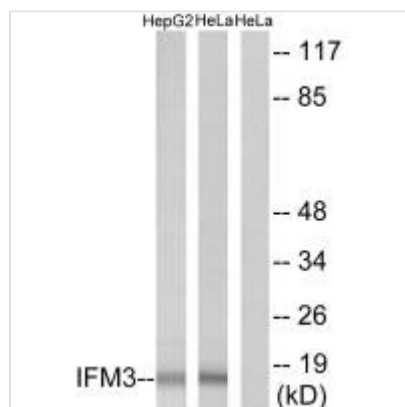




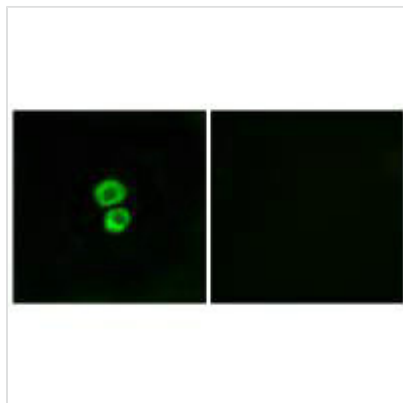
IFITM3 Antibody

Product Code	CSB-PA083563
Storage	Upon receipt, store at -20°C or -80°C. Avoid repeated freeze.
Uniprot No.	Q01628
Immunogen	Synthesized peptide derived from internal of Human IFM3.
Raised In	Rabbit
Species Reactivity	Human
Specificity	The antibody detects endogenous levels of total IFM3 protein.
Tested Applications	ELISA,WB,IF;WB:1:500-1:3000,IF:1:100-1:500
Form	Rabbit IgG in phosphate buffered saline (without Mg ²⁺ and Ca ²⁺), pH 7.4, 150mM NaCl, 0.02% sodium azide and 50% glycerol.
Purification Method	The antibody was affinity-purified from rabbit antiserum by affinity-chromatography using epitope-specific immunogen.
Clonality	Polyclonal
Alias	IFM3; INIB; interferon-induced transmembrane protein 3; interferon-inducible protein 1-8U;
Product Type	Polyclonal Antibody
Immunogen Species	Homo sapiens (Human)
Target Names	IFITM3

Image



Western blot analysis of extracts from HepG2 cells and HeLa cells, using IFM3 antibody.



Immunofluorescence analysis of MCF-7 cells, using IFM3 antibody.

Usage

For Research Use Only. Not for use in diagnostic or therapeutic procedures.