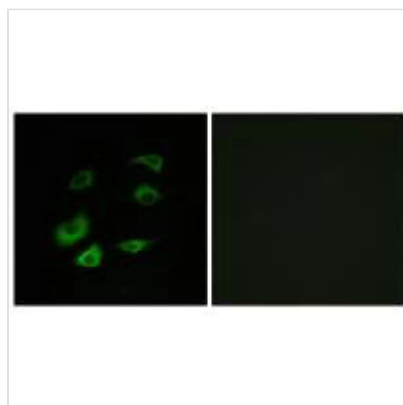




ANAPC1 Antibody

Product Code	CSB-PA549756
Storage	Upon receipt, store at -20°C or -80°C. Avoid repeated freeze.
Uniprot No.	Q9H1A4
Immunogen	Synthesized peptide derived from internal of Human Cyclosome 1.
Raised In	Rabbit
Species Reactivity	Human,Mouse
Specificity	The antibody detects endogenous levels of total Cyclosome 1 protein.
Tested Applications	ELISA,IF;IF:1:100-1:500
Form	Rabbit IgG in phosphate buffered saline (without Mg ²⁺ and Ca ²⁺), pH 7.4, 150mM NaCl, 0.02% sodium azide and 50% glycerol.
Purification Method	The antibody was affinity-purified from rabbit antiserum by affinity-chromatography using epitope-specific immunogen.
Clonality	Polyclonal
Alias	ANAPC1; ANC1; Anaphase promoting complex subunit 1; Cyclosome subunit 1; Mitotic checkpoint regulator
Product Type	Polyclonal Antibody
Immunogen Species	Homo sapiens (Human)
Target Names	ANAPC1

Image



Immunofluorescence analysis of HepG2 cells, using Cyclosome 1 antibody.

Usage For Research Use Only. Not for use in diagnostic or therapeutic procedures.