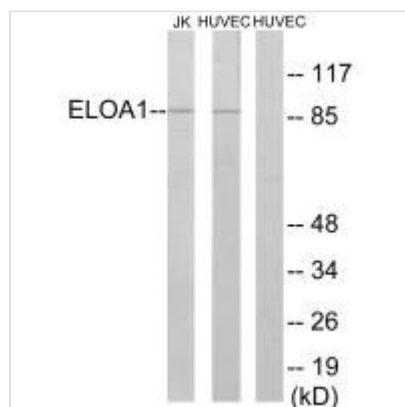




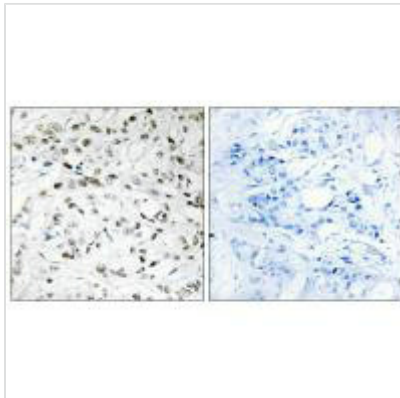
TCEB3 Antibody

| | |
|----------------------------|--|
| Product Code | CSB-PA551930 |
| Storage | Upon receipt, store at -20°C or -80°C. Avoid repeated freeze. |
| Uniprot No. | Q14241 |
| Immunogen | Synthesized peptide derived from internal of Human ELOA1. |
| Raised In | Rabbit |
| Species Reactivity | Human,Mouse,Rat |
| Specificity | The antibody detects endogenous levels of total ELOA1 protein. |
| Tested Applications | ELISA,WB,IHC;WB:1:500-1:3000,IHC:1:50-1:100 |
| Form | Rabbit IgG in phosphate buffered saline (without Mg ²⁺ and Ca ²⁺), pH 7.4, 150mM NaCl, 0.02% sodium azide and 50% glycerol. |
| Purification Method | The antibody was affinity-purified from rabbit antiserum by affinity-chromatography using epitope-specific immunogen. |
| Clonality | Polyclonal |
| Alias | Transcription elongation factor B polypeptide 3; RNA polymerase II transcription factor SIII subunit A1; SIII p110; Elongin-A; EloA |
| Product Type | Polyclonal Antibody |
| Immunogen Species | Homo sapiens (Human) |
| Target Names | ELOA |

Image



Western blot analysis of extracts from Jurkat cells and HUVEC cells, using ELOA1 antibody.



Immunohistochemistry analysis of paraffin-embedded human breast carcinoma tissue using ELOA1 antibody.