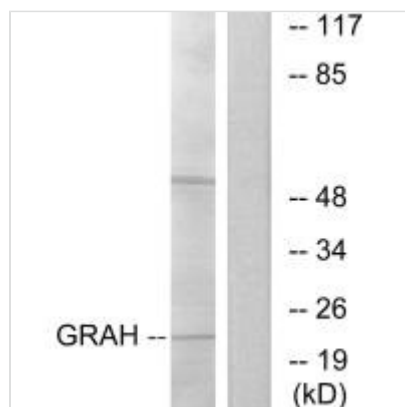




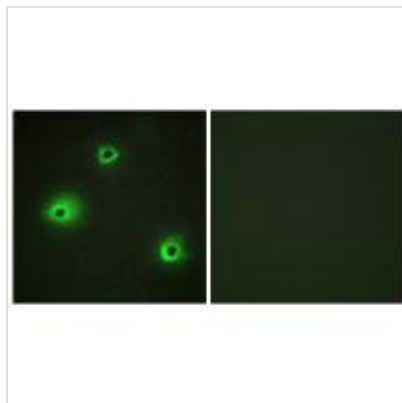
GZMH Antibody

Product Code	CSB-PA966723
Storage	Upon receipt, store at -20°C or -80°C. Avoid repeated freeze.
Uniprot No.	P20718
Immunogen	Synthesized peptide derived from internal of Human GRAH.
Raised In	Rabbit
Species Reactivity	Human
Specificity	The antibody detects endogenous levels of total GRAH protein.
Tested Applications	ELISA, WB, IF; WB: 1:500-1:3000, IF: 1:100-1:500
Form	Rabbit IgG in phosphate buffered saline (without Mg ²⁺ and Ca ²⁺), pH 7.4, 150mM NaCl, 0.02% sodium azide and 50% glycerol.
Purification Method	The antibody was affinity-purified from rabbit antiserum by affinity-chromatography using epitope-specific immunogen.
Clonality	Polyclonal
Alias	Granzyme H [Precursor]; EC 3.4.21.-; Cytotoxic T-lymphocyte proteinase; Cathepsin G-like 2; CTSG2
Product Type	Polyclonal Antibody
Immunogen Species	Homo sapiens (Human)
Target Names	GZMH

Image



Western blot analysis of extracts from K562 cells, using GRAH antibody.



Immunofluorescence analysis of A549 cells,
using GRAH antibody.