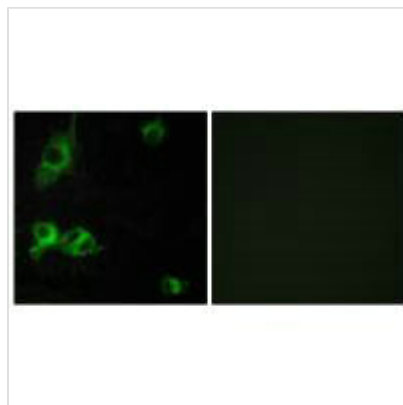




LAMA1 Antibody

Product Code	CSB-PA235745
Storage	Upon receipt, store at -20°C or -80°C. Avoid repeated freeze.
Uniprot No.	P25391
Immunogen	Synthesized peptide derived from internal of Human LAMA1.
Raised In	Rabbit
Species Reactivity	Human
Specificity	The antibody detects endogenous levels of total LAMA1 protein.
Tested Applications	ELISA,IF;IF:1:100-1:500
Form	Rabbit IgG in phosphate buffered saline (without Mg ²⁺ and Ca ²⁺), pH 7.4, 150mM NaCl, 0.02% sodium azide and 50% glycerol.
Purification Method	The antibody was affinity-purified from rabbit antiserum by affinity-chromatography using epitope-specific immunogen.
Clonality	Polyclonal
Alias	LAMA; laminin A; laminin alpha-1;
Product Type	Polyclonal Antibody
Immunogen Species	Homo sapiens (Human)
Target Names	LAMA1

Image



Immunofluorescence analysis of COS-7 cells, using LAMA1 antibody.

Usage

For Research Use Only. Not for use in diagnostic or therapeutic procedures.