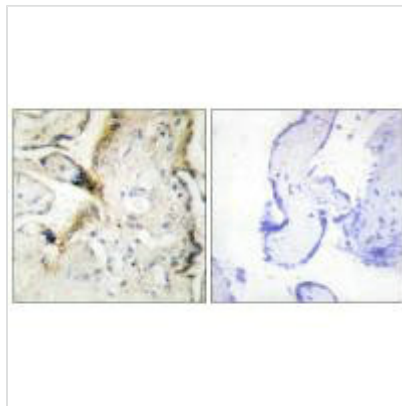




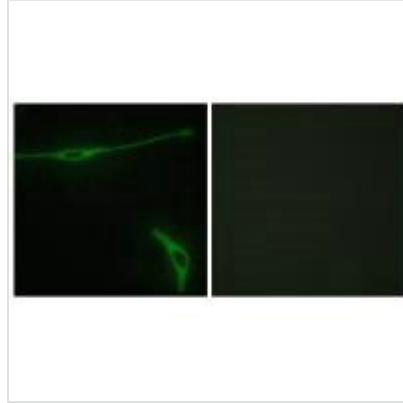
LAMA2 Antibody

Product Code	CSB-PA287762
Storage	Upon receipt, store at -20°C or -80°C. Avoid repeated freeze.
Uniprot No.	P24043
Immunogen	Synthesized peptide derived from internal of Human LAMA2.
Raised In	Rabbit
Species Reactivity	Human, Mouse
Specificity	The antibody detects endogenous levels of total LAMA2 protein.
Tested Applications	ELISA, IHC, IF; IHC:1:50-1:100, IF:1:100-1:500
Form	Rabbit IgG in phosphate buffered saline (without Mg ²⁺ and Ca ²⁺), pH 7.4, 150mM NaCl, 0.02% sodium azide and 50% glycerol.
Purification Method	The antibody was affinity-purified from rabbit antiserum by affinity-chromatography using epitope-specific immunogen.
Clonality	Polyclonal
Alias	LAMM; laminin M; laminin alpha-2; merosin heavy chain;
Product Type	Polyclonal Antibody
Immunogen Species	Homo sapiens (Human)
Target Names	LAMA2

Image



Immunohistochemistry analysis of paraffin-embedded human placenta tissue using LAMA2 antibody.



Immunofluorescence analysis of NIH/3T3 cells, using LAMA2 antibody.

Usage

For Research Use Only. Not for use in diagnostic or therapeutic procedures.