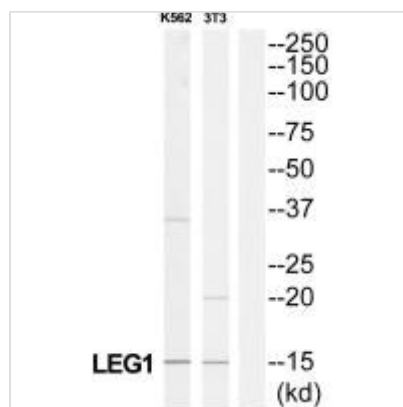




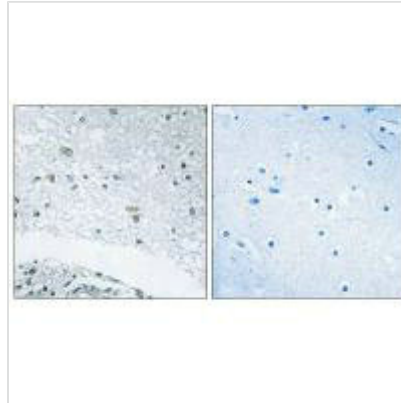
LAMC3 Antibody

Product Code	CSB-PA914944
Storage	Upon receipt, store at -20°C or -80°C. Avoid repeated freeze.
Uniprot No.	Q9Y6N6
Immunogen	Synthesized peptide derived from internal of Human LAMC3.
Raised In	Rabbit
Species Reactivity	Human,Mouse
Specificity	The antibody detects endogenous levels of total LAMC3 protein.
Tested Applications	ELISA,WB,IHC,IF;WB:1:500-1:3000,IHC:1:50-1:100,IF:1:100-1:500
Form	Rabbit IgG in phosphate buffered saline (without Mg ²⁺ and Ca ²⁺), pH 7.4, 150mM NaCl, 0.02% sodium azide and 50% glycerol.
Purification Method	The antibody was affinity-purified from rabbit antiserum by affinity-chromatography using epitope-specific immunogen.
Clonality	Polyclonal
Alias	Laminin subunit gamma-3; Laminin 12 gamma 3 subunit;
Product Type	Polyclonal Antibody
Immunogen Species	Homo sapiens (Human)
Target Names	LAMC3

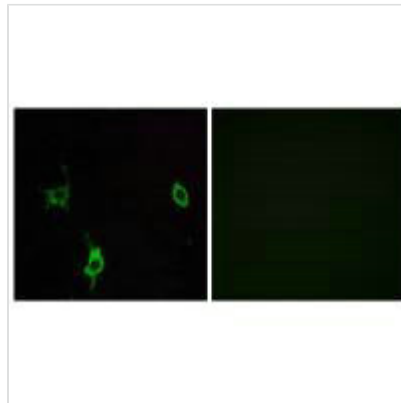
Image



Western blot analysis of extracts from K562 cells and 3T3 cells, using LAMC3 antibody.



Immunohistochemistry analysis of paraffin-embedded human brain tissue using LAMC3 antibody.



Immunofluorescence analysis of LOVO cells, using LAMC3 antibody.

Usage

For Research Use Only. Not for use in diagnostic or therapeutic procedures.