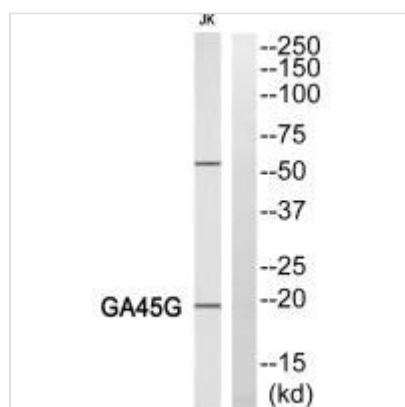




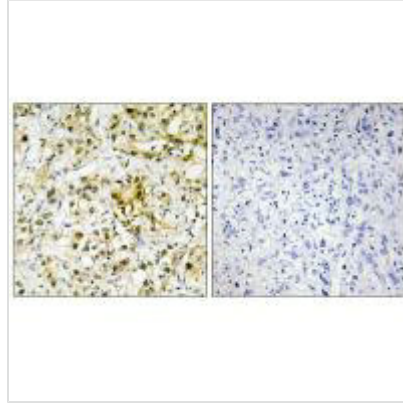
LGALS4 Antibody

| | |
|----------------------------|----------------------------------------------------------------------------------------------------------------------------------------------------|
| Product Code | CSB-PA787674 |
| Storage | Upon receipt, store at -20°C or -80°C. Avoid repeated freeze. |
| Uniprot No. | P56470 |
| Immunogen | Synthesized peptide derived from internal of Human LEG4. |
| Raised In | Rabbit |
| Species Reactivity | Human |
| Specificity | The antibody detects endogenous levels of total LEG4 protein. |
| Tested Applications | ELISA,WB,IHC;WB:1:500-1:3000,IHC:1:50-1:100 |
| Form | Rabbit IgG in phosphate buffered saline (without Mg ²⁺ and Ca ²⁺), pH 7.4, 150mM NaCl, 0.02% sodium azide and 50% glycerol. |
| Purification Method | The antibody was affinity-purified from rabbit antiserum by affinity-chromatography using epitope-specific immunogen. |
| Clonality | Polyclonal |
| Alias | Galectin-4; Lactose-binding lectin 4; L-36 lactose-binding protein; L36LBP; Antigen NY-CO-27 |
| Product Type | Polyclonal Antibody |
| Immunogen Species | Homo sapiens (Human) |
| Target Names | LGALS4 |

Image



Western blot analysis of extracts from HeLa cells, using LEG7 antibody.



Immunohistochemistry analysis of paraffin-embedded human liver carcinoma tissue using LEG4 antibody.

Usage

For Research Use Only. Not for use in diagnostic or therapeutic procedures.