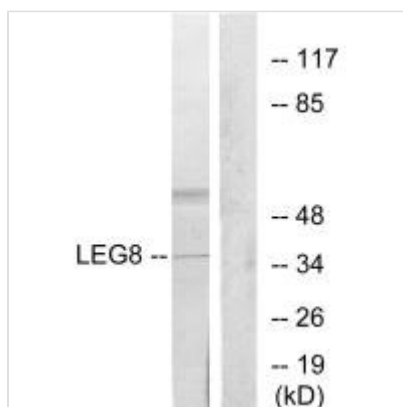




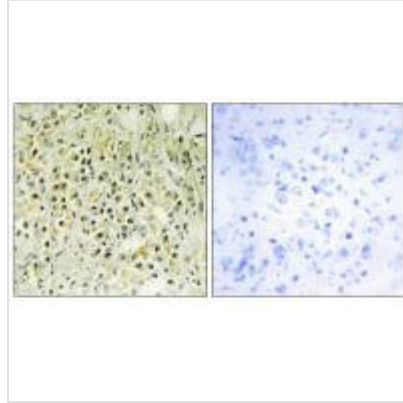
LGALS8 Antibody

Product Code	CSB-PA067074
Storage	Upon receipt, store at -20°C or -80°C. Avoid repeated freeze.
Uniprot No.	O00214
Immunogen	Synthesized peptide derived from internal of Human LEG8.
Raised In	Rabbit
Species Reactivity	Human,Mouse
Specificity	The antibody detects endogenous levels of total LEG8 protein.
Tested Applications	ELISA,WB,IHC;WB:1:500-1:3000,IHC:1:50-1:100
Form	Rabbit IgG in phosphate buffered saline (without Mg ²⁺ and Ca ²⁺), pH 7.4, 150mM NaCl, 0.02% sodium azide and 50% glycerol.
Purification Method	The antibody was affinity-purified from rabbit antiserum by affinity-chromatography using epitope-specific immunogen.
Clonality	Polyclonal
Alias	Galectin-8; Gal-8; Prostate carcinoma tumor antigen 1; PCTA-1; Po66 carbohydrate-binding protein
Product Type	Polyclonal Antibody
Immunogen Species	Homo sapiens (Human)
Target Names	LGALS8

Image



Western blot analysis of extracts from 3T3 cells, using LEG8 antibody.



Immunohistochemistry analysis of paraffin-embedded human prostate carcinoma tissue using LEG8 antibody.

Usage

For Research Use Only. Not for use in diagnostic or therapeutic procedures.