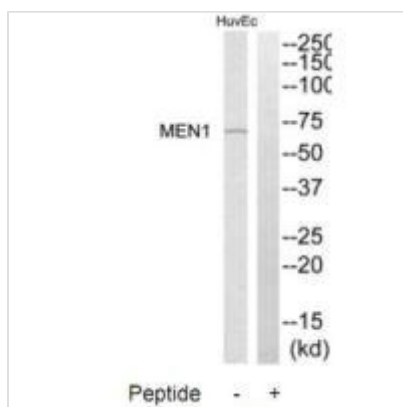




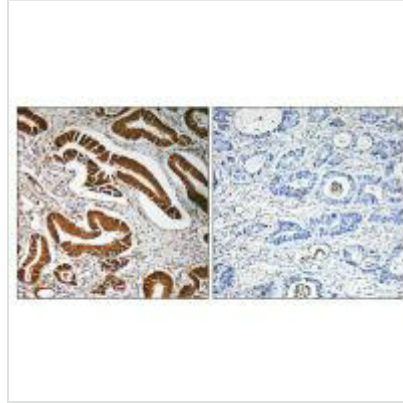
MEN1 Antibody

Product Code	CSB-PA108807
Storage	Upon receipt, store at -20°C or -80°C. Avoid repeated freeze.
Uniprot No.	O00255
Immunogen	Synthesized peptide derived from internal of Human MEN1.
Raised In	Rabbit
Species Reactivity	Human
Specificity	The antibody detects endogenous levels of total MEN1 protein.
Tested Applications	ELISA,WB,IHC;WB:1:500-1:3000,IHC:1:50-1:100
Form	Rabbit IgG in phosphate buffered saline (without Mg ²⁺ and Ca ²⁺), pH 7.4, 150mM NaCl, 0.02% sodium azide and 50% glycerol.
Purification Method	The antibody was affinity-purified from rabbit antiserum by affinity-chromatography using epitope-specific immunogen.
Clonality	Polyclonal
Alias	MEAI; Menin; SCG2; Wermer syndrome; Zollinger-Ellison syndrome
Product Type	Polyclonal Antibody
Immunogen Species	Homo sapiens (Human)
Target Names	MEN1

Image



Western blot analysis of extracts from HuvEc cells, using MEN1 antibody.



Immunohistochemistry analysis of paraffin-embedded human colon carcinoma tissue, using MEN1 antibody.

Usage

For Research Use Only. Not for use in diagnostic or therapeutic procedures.