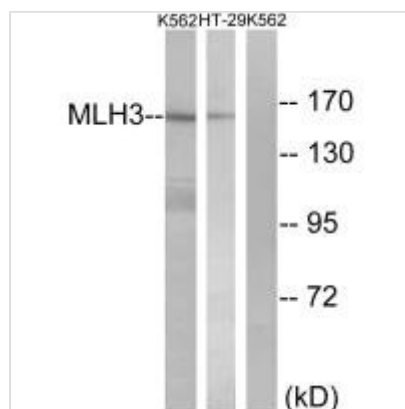




MLH3 Antibody

Product Code	CSB-PA262280
Storage	Upon receipt, store at -20°C or -80°C. Avoid repeated freeze.
Uniprot No.	Q9UHC1
Immunogen	Synthesized peptide derived from internal of Human MLH3.
Raised In	Rabbit
Species Reactivity	Human
Specificity	The antibody detects endogenous levels of total MLH3 protein.
Tested Applications	ELISA, WB; WB: 1:500-1:3000
Form	Rabbit IgG in phosphate buffered saline (without Mg ²⁺ and Ca ²⁺), pH 7.4, 150mM NaCl, 0.02% sodium azide and 50% glycerol.
Purification Method	The antibody was affinity-purified from rabbit antiserum by affinity-chromatography using epitope-specific immunogen.
Clonality	Polyclonal
Alias	DNA mismatch repair protein Mlh3; MutL protein homolog 3;
Product Type	Polyclonal Antibody
Immunogen Species	Homo sapiens (Human)
Target Names	MLH3

Image



Western blot analysis of extracts from K562 cells and HT-29 cells, using MLH3 antibody.