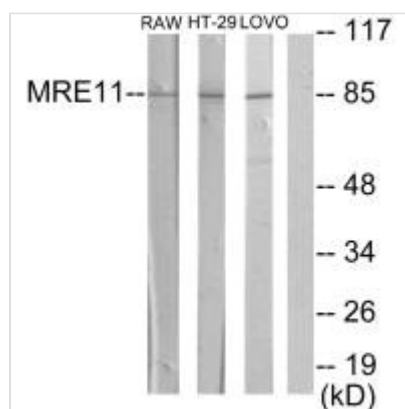




MRE11A Antibody

Product Code	CSB-PA584586
Storage	Upon receipt, store at -20°C or -80°C. Avoid repeated freeze.
Uniprot No.	P49959
Immunogen	Synthesized peptide derived from internal of Human MRE11A.
Raised In	Rabbit
Species Reactivity	Human,Mouse,Rat
Specificity	The antibody detects endogenous levels of total MRE11A protein.
Tested Applications	ELISA,WB;WB:1:500-1:3000
Form	Rabbit IgG in phosphate buffered saline (without Mg ²⁺ and Ca ²⁺), pH 7.4, 150mM NaCl, 0.02% sodium azide and 50% glycerol.
Purification Method	The antibody was affinity-purified from rabbit antiserum by affinity-chromatography using epitope-specific immunogen.
Clonality	Polyclonal
Alias	Double-strand break repair protein MRE11A; MRE11 homolog 1; MRE11 meiotic recombination 11 homolog A; MRE11A; HNGS1
Product Type	Polyclonal Antibody
Immunogen Species	Homo sapiens (Human)
Target Names	MRE11

Image



Western blot analysis of extracts from RAW264.7 cells, HT-29 cells and LOVO cells, using MRE11A antibody.

Usage For Research Use Only. Not for use in diagnostic or therapeutic procedures.