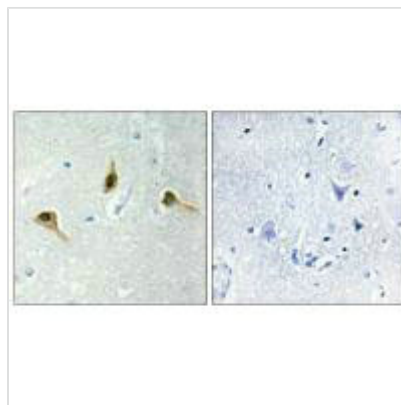




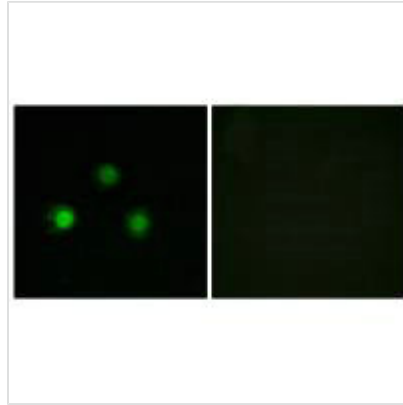
MSH2 Antibody

Product Code	CSB-PA791631
Storage	Upon receipt, store at -20°C or -80°C. Avoid repeated freeze.
Uniprot No.	P43246
Immunogen	Synthesized peptide derived from internal of Human MSH2.
Raised In	Rabbit
Species Reactivity	Human,Mouse
Specificity	The antibody detects endogenous levels of total MSH2 protein.
Tested Applications	ELISA,WB,IHC,IF;WB:1:500-1:3000,IHC:1:50-1:200,IF:1:100-1:200
Form	Rabbit IgG in phosphate buffered saline (without Mg ²⁺ and Ca ²⁺), pH 7.4, 150mM NaCl, 0.02% sodium azide and 50% glycerol.
Purification Method	The antibody was affinity-purified from rabbit antiserum by affinity-chromatography using epitope-specific immunogen.
Clonality	Polyclonal
Alias	COCA1; DNA mismatch repair protein Msh2; FCC1; HNPCC; HNPCC1
Product Type	Polyclonal Antibody
Immunogen Species	Homo sapiens (Human)
Target Names	MSH2

Image



Immunohistochemistry analysis of paraffin-embedded human brain tissue using MSH2 antibody.



Immunofluorescence analysis of HUVEC cells, using MSH2 antibody.

Usage

For Research Use Only. Not for use in diagnostic or therapeutic procedures.