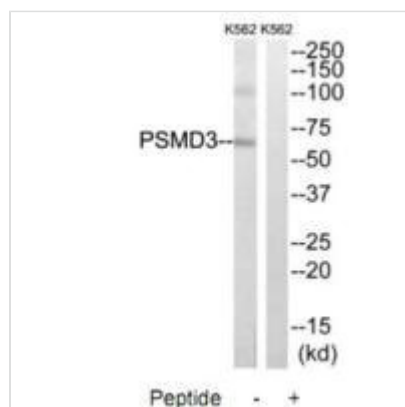




PSMD3 Antibody

Product Code	CSB-PA247793
Storage	Upon receipt, store at -20°C or -80°C. Avoid repeated freeze.
Uniprot No.	O43242
Immunogen	Synthesized peptide derived from internal of Human PSMD3.
Raised In	Rabbit
Species Reactivity	Human
Specificity	The antibody detects endogenous levels of total PSMD3 protein.
Tested Applications	ELISA, WB, IHC; WB:1:500-1:3000, IHC:1:50-1:100
Form	Rabbit IgG in phosphate buffered saline (without Mg ²⁺ and Ca ²⁺), pH 7.4, 150mM NaCl, 0.02% sodium azide and 50% glycerol.
Purification Method	The antibody was affinity-purified from rabbit antiserum by affinity-chromatography using epitope-specific immunogen.
Clonality	Polyclonal
Alias	26S proteasome non-ATPase regulatory subunit 3; 26S proteasome regulatory subunit S3; proteasome subunit p58; PSD3;
Product Type	Polyclonal Antibody
Immunogen Species	Homo sapiens (Human)
Target Names	PSMD3

Image



Western blot analysis of extracts from K562 cells, using PSMD3 antibody.



Immunohistochemistry analysis of paraffin-embedded human breast carcinoma tissue using PSMD3 antibody.